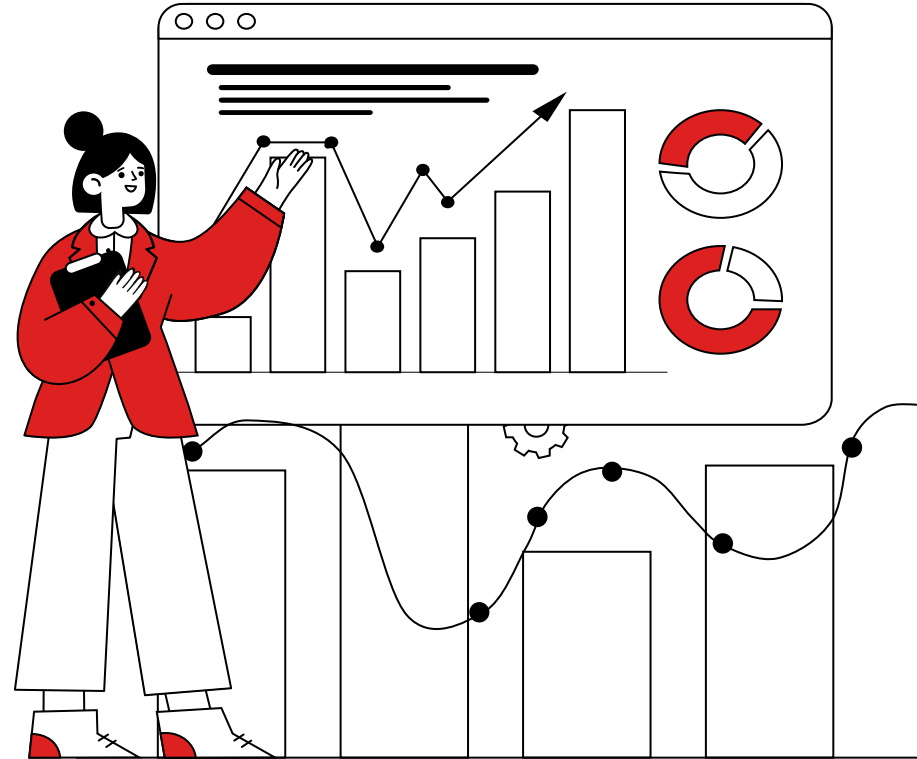
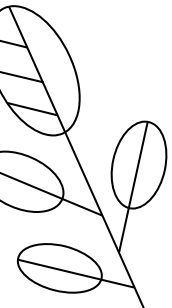


TERRAPIN

THINK

TANK

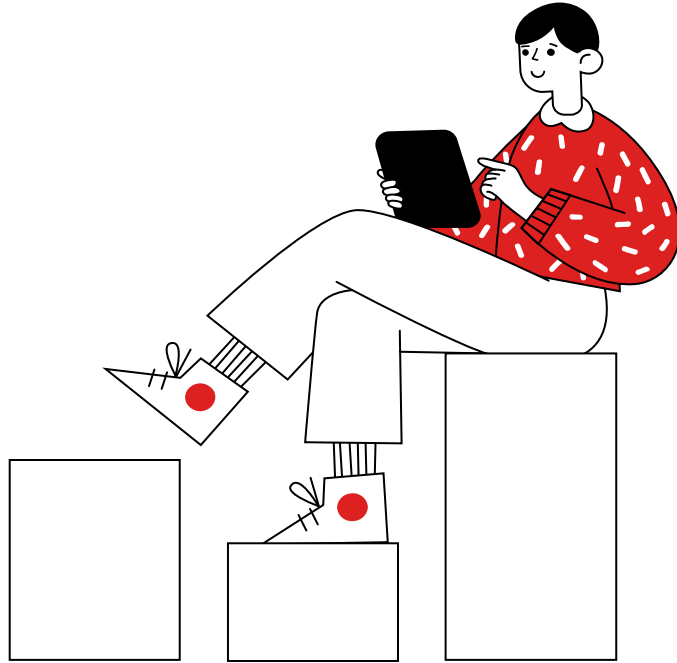
Information Session



WHAT IS A... THINK TANK?

A think tank is an independent organization that researches, evaluates, and advocates for public policy solutions.





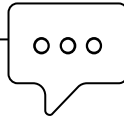
TERRAPIN THINK TANK

Terrapin Think Tank is a new policy initiative dedicated to developing and advocating for policy solutions to issues affecting the local Prince George's County community.

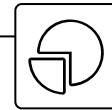
**CHANNEL
RESOURCES FROM
UNIVERSITY BACK
INTO THE
SURROUNDING
COMMUNITY**



**WORK WITH
COMMUNITY
MEMBERS TO
IDENTIFY ISSUE
AREAS**



**WORK WITH POLICY
MAKERS TO
DEVELOP
REALISTIC POLICY
SOLUTIONS TO
COMMUNITY NEEDS**



GOALS OF TTT

COMMUNITY PARTNERSHIPS

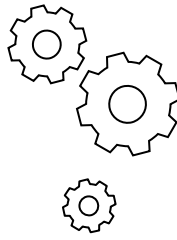


HEALTH
DEPARTMENT
Prince George's County



SCHOOL OF
PUBLIC HEALTH

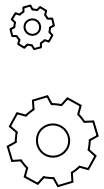
FOUNDERS



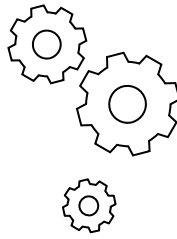
Isha Yardi



Daniel Fong



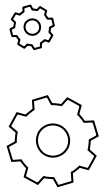
OUR TEAM: DIRECTORS



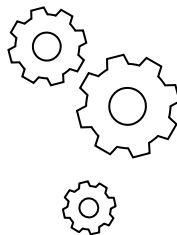
Ethan Adler



Esohe Owie



OUR TEAM: ASSOCIATE DIRECTORS



Sophia Thompson

AD of Communications



Roshni Pallavajjala

AD of Community Outreach



Anushka Poddar

AD of Teaching &
Recruitment



Amrutha Alibilli

AD of Funding



PREVIOUS PROJECTS

COMMUNITY HEALTH WORKERS INITIATIVE

Worked with the Prince George's County Department of Health to create an implementation framework for staffing Community Health Workers and telehealth hubs in non-traditional settings.

PHYSICIAN TAX CREDIT LEGISLATION

Proposed statewide legislation in the last session to provide a tax credit to physicians practicing and/or opening a practice in an HRSA-designated Health Professionals Shortage Area (HPSA).

CURRENT PROJECTS

TRANSPORTATION EQUITY

Exploring affordable transportation infrastructure to better connect patients to appointments at Federally Qualified Health Centers.

SOCIAL MEDIA PROJECT

Developing a student internship program between UMD and Prince George's Health Department to explore how the health department can better leverage social media to improve health information dissemination.

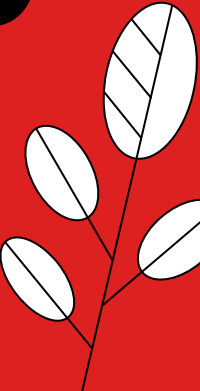
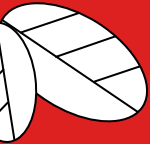
HEALTH EQUITY CHAMPIONS

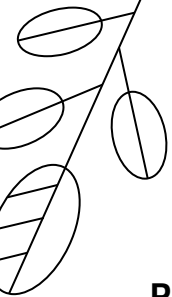
Working with the Health Action Coalition to develop a curriculum to teach residents of Prince George's County about the principles of health equity.



ASSOCIATE

DIRECTOR PROJECTS





SOPHIA

Reducing Period Poverty in Prince George's County

- **1 in 9 women** aged 19-44 in Maryland live below the Federal Poverty Level
- **2 in 5 women** in the United States have difficulties purchasing menstrual products

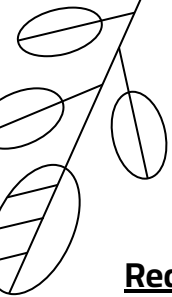
Pilot Program

- Provided over 700 menstrual products to Hyattsville Library
- Partnership with Teen Action Group to support program



Prince George's County
Memorial Library System

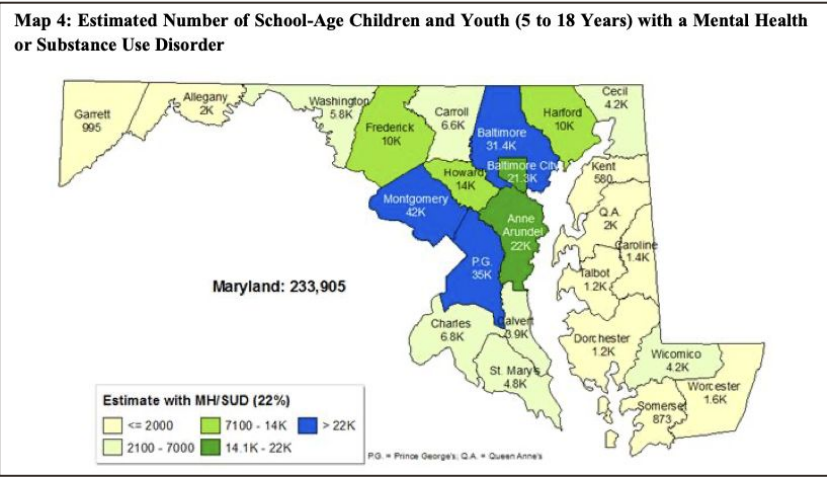




ROSHNI

Reducing Impact of Mental Health Disorders in Prince George's County

- **31.5%** of high school students felt sad or hopeless frequently.
- **17.7%** of high school students have seriously considered attempting suicide.
- **Objective:** Implement support groups in high school to help students with mental health disorders.



Mental Health Care for Youth: Support Groups

May 2023

Terrapin Think Tank at the University of Maryland, College Park

Prepared By: Roshni Pallavajjala

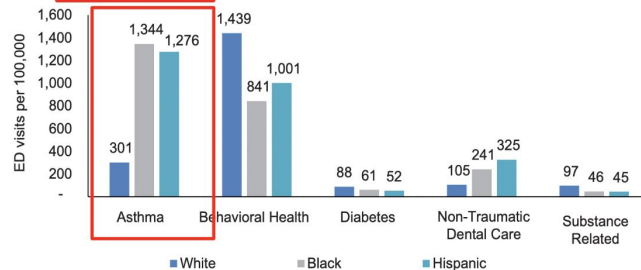




ANUSHKA

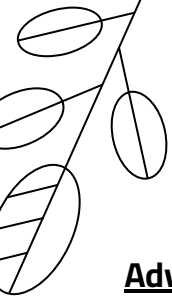
- Pediatric asthma is the **#1 most common health condition** in PGCPSS
- Many low-income and minority students cannot afford to purchase their own inhalers (~\$98)
- PG County schools do not carry inhalers
- **Objective:**
 - Enact a stock albuterol policy in PG County that allows school nurses to administer albuterol in response to any student experiencing respiratory distress
- **Benefits:**
 - Reduce asthmatic crises
 - Alleviate racial disparities
 - Lessen the burden on EMS

Figure 4.8
Rates of ED Visits for Children per 100,000 Population, by Race and Ethnicity and by Condition, 2017



SOURCE: Maryland Health Services Cost Review Commission, 2017; DC Hospital Association, 2017.
NOTES: Includes 2017 ED discharges in Maryland and DC for Prince George's County residents aged younger than 18 years. Rates are age-adjusted and presented as rates per 100,000 population.





AMRUTHA

Advancing Hispanic Mental Health Equity in Prince George's County: MHFA Training

- **1 in 3** Prince George's county high school students felt "sad" or "hopeless" in the past year alone (PGC Health Zone, 2022)
 - Highest among Hispanic students
- Prince George's county is a mental health professional shortage area with **only one provider for every 460 residents**
- **Objective:** Provide public school teachers (i.e. ESOL) with multilingual Mental Health First Aid training to quickly recognize mental health symptoms and provide equitable resources

MHFA USA Founding Partner



Mental Health FIRST AID
MARYLAND

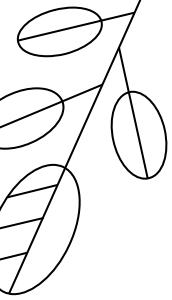
from NATIONAL COUNCIL FOR MENTAL WELLBEING



MarylandROPTA

REINFORCING OVERDOSE PREVENTION THROUGH TRAINING & ADVOCACY





STUDENT FELLOWS PROGRAM

Spring 2024: Eight student fellows from different majors across campus

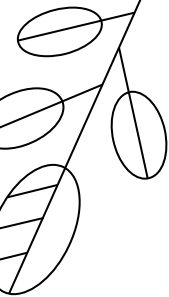
Fellows take a 1-credit Student Initiated Course (STIC) to learn the basics of local health policy advocacy and community-centered policy design → *this upcoming spring 2025!*

- The course meets once a week and will give you an opportunity to collaborate with other fellows to work on your policy projects

Fellows assist with writing, research, and meeting with community members for TTT's policy projects

- As part of our STIC, every student works on a personal project over the semester to build out an original health policy or intervention that can be implemented in Prince George's County





TTT TRAJECTORY

Year 1: Student Fellow

- Take a one-credit STIC course in the spring semester.
- Complete independent project, including white paper and pitch presentation.

Year 2-3: Associate Director/Project Manager

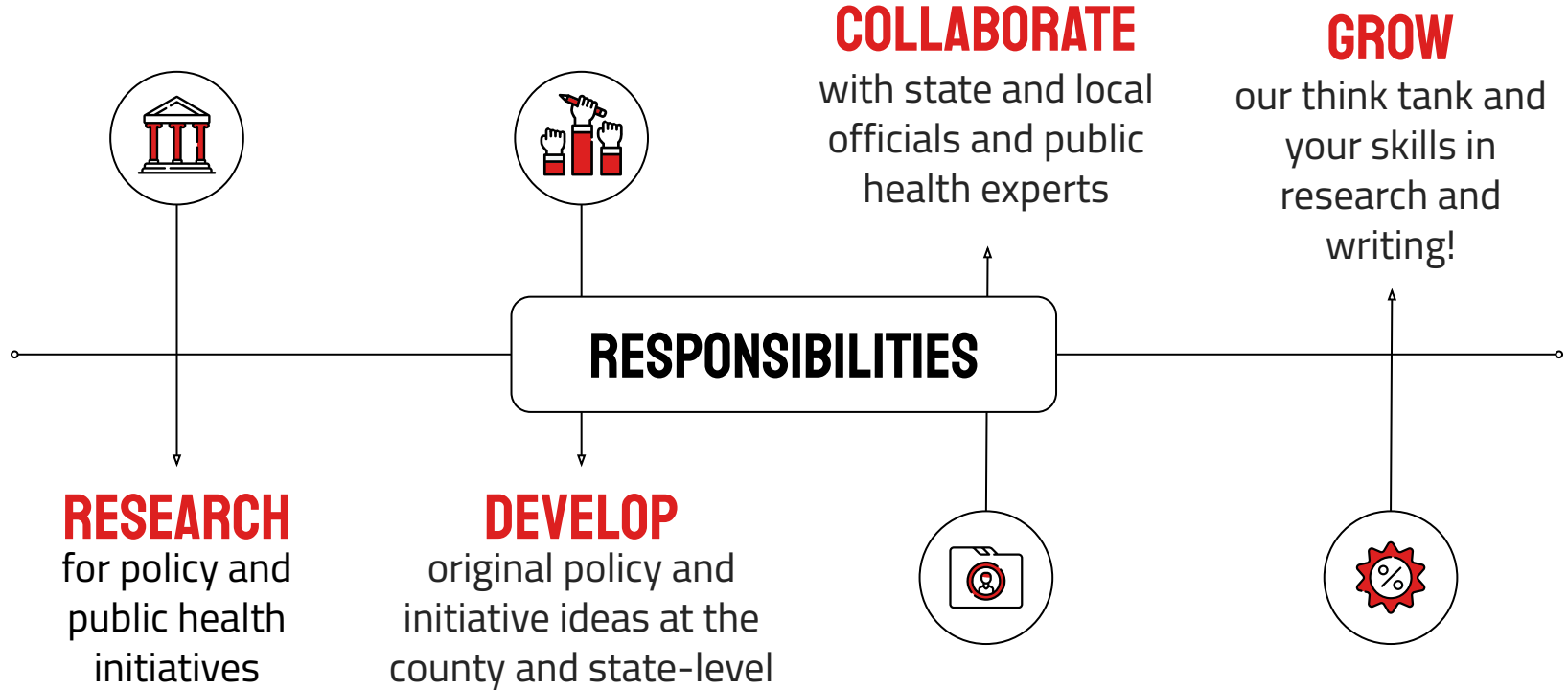
- Contribute to the operation of TTT leadership.
- Support the development of new policy projects and the direction of all ongoing projects.

Year 4: Co-Director

- Lead the development of policy projects, expand the capacity and influence of TTT, and create a space for students to engage in meaningful health policy work.
- Work closely with the Office of Public Health Practice and Community Engagement (OPHPCE).



WE'RE LOOKING FOR FELLOWS!





[TINYURL.COM/TTT-24](https://tinyurl.com/TTT-24)

EMAIL SPH-TERRAPINTHINKTANK@UMD.EDU WITH ANY QUESTIONS!

CLOSES ON NOVEMBER 10TH, 2024 @ 11:59PM!